

Metropolitan Housing and CDC

- 38 new single-family homes constructed and sold to low- and moderate-income, first-time buyers.
- 29 existing single-family homes rehabilitated.
- Metro Arms Senior Citizen Complex (1996) provides 12 apartments to low-income elderly and includes comprehensive supportive services.
- Metro House complex (1997) offers 9 units of affordable housing for residents with special needs.
- Hope Village complex (1997) offers independent living in four units serving emotionally challenged persons.
- New Horizons (1999) offers 24 units for low- to moderate-income tenants.
- Wactor Gardens, Inc. (1999) provides 11 apartment units for senior citizens in Ahoskie, North Carolina.
- Shalom House (2002) is a 24-unit complex that allows independent living for people who are physically handicapped.
- Noel Village (2002) provides 49 apartments for senior citizens in Conway, South Carolina.
- Brook's place (2002) in Reidsville, NC offers 37 apartments for senior citizens.
- And more...

Metropolitan Housing and CDC has created or rehabilitated more than 500 units of housing in the last twelve years. MH/CDC works to empower the community by building decent homes and safe neighborhoods.

Shalom House
1255 Cowell Farm Road
Washington, NC 27889
(252) 946-8585

Office Hours
Monday through Thursday
8:30 am to 3:30 pm



102 West Martin Luther King, Jr. Drive
PO Box 1706
Washington, NC 27889
www.MetropolitanCommunity.org

Shalom House is managed by
GEM Management, Inc.
2021 Cross Beam Drive
Charlotte, NC 28217

All rents will be based on income with rental assistance available. Credit and criminal checks required. Certain income restrictions apply.

Shalom House

*Housing for Those with
Special Needs*



*Winner of the Fannie
Mae Foundation's 2003
Maxwell Award for
Special Needs Housing*



Shalom House

Shalom House is the first development in North Carolina to be both fully accessible and able to offer rent subsidy. Rents, starting at \$0, are based on income; rental assistance is available.

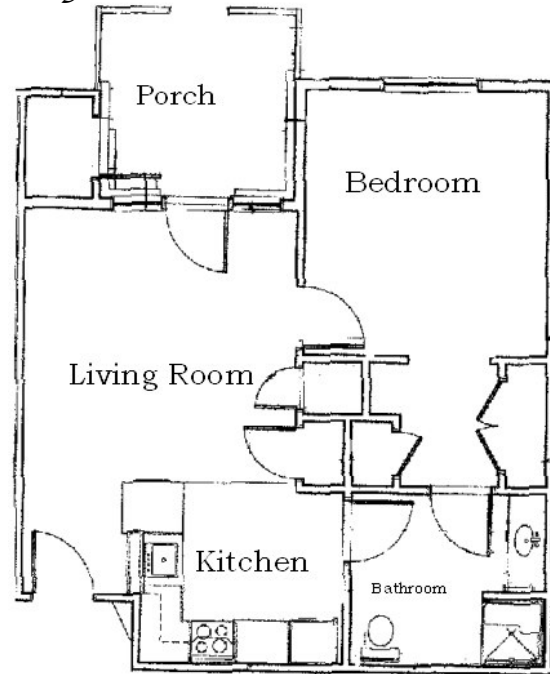
Nearby Beaufort County Hospital and Wellness Center offer residents convenient medical care. Shopping centers are also convenient to Shalom House. Transportation will soon be available for residents.



Shalom House maintains a peaceful atmosphere. Screened porches offer protected socializing areas. Each apartment leads out onto an open porch. Residents are encouraged to socialize through regular programs in the community center.

Shalom House has been designed for full wheelchair accessibility. The entire community was designed and constructed to provide independence for mobility-impaired and physically-challenged adults.

Apartment Floor Plan



The Community Center is connected by wheelchair accessible corridors and doors to the apartment wings:

- Fully Accessible Kitchen
- Dining Room
- Activity Area
- Space for Group Meetings and Seminars
- Handicapped Accessible Bathrooms
- Computer Stations
- Counseling Office
- Management Office
- Mail Center

Features and Amenities

- One-bedroom Apartments
- Spacious Floor Plans
- Bathroom and Shower (Wheelchair Accessible)
- Kitchens, equipped with appliances (Wheelchair Accessible)
- Washers and Dryers in Each Building (Wheelchair Accessible)
- Energy-efficient Central Heat and Air
- Property is Fully Accessible
- Cable TV Hookups
- Mini-blinds
- Patio/Deck
- Closets adapted for wheelchair accessibility
- On-site Community Center and Office



Kitchen